 US Army Corps of Engineers Jacksonville District SAFETY ON THIS JOB DEPENDS ON YOU	
Date: Drawn by: Checked by: Date:	GHR WRM WRM WRM Date: MAY 2020
DEPARTMENT OF THE ARMY JACKSONVILLE DISTRICT, CORPS OF ENGINEERS JACKSONVILLE, FLORIDA	
OKEECHOBEE WATERWAY (EAST ZONE) CALOOSAHATCHEE RIVER, FLORIDA GLADES, HENRY & LEE COUNTIES, FLORIDA PROJECT CONDITION SURVEY FY20 8-FOOT PROJECT AREA EAST OF THE TOWN OF ALVA PLAN	
Scale: AS SHOWN Drawing no. 3 SHEET 03 OF 59	

GRAPHIC SCALE
 100' 0 100' 200'
 NOTES:
 1. REFER TO SURVEY NO. 20-094.
 2. SEE SHEET NO. 1 FOR SURVEY NOTES.

MATCHLINE SHEET NO. 002 OWW-EAST

MATCHLINE SHEET NO. 004 OWW-EAST

Caloosahatchee River

10 9 8 7 6 5 4 3 2 1

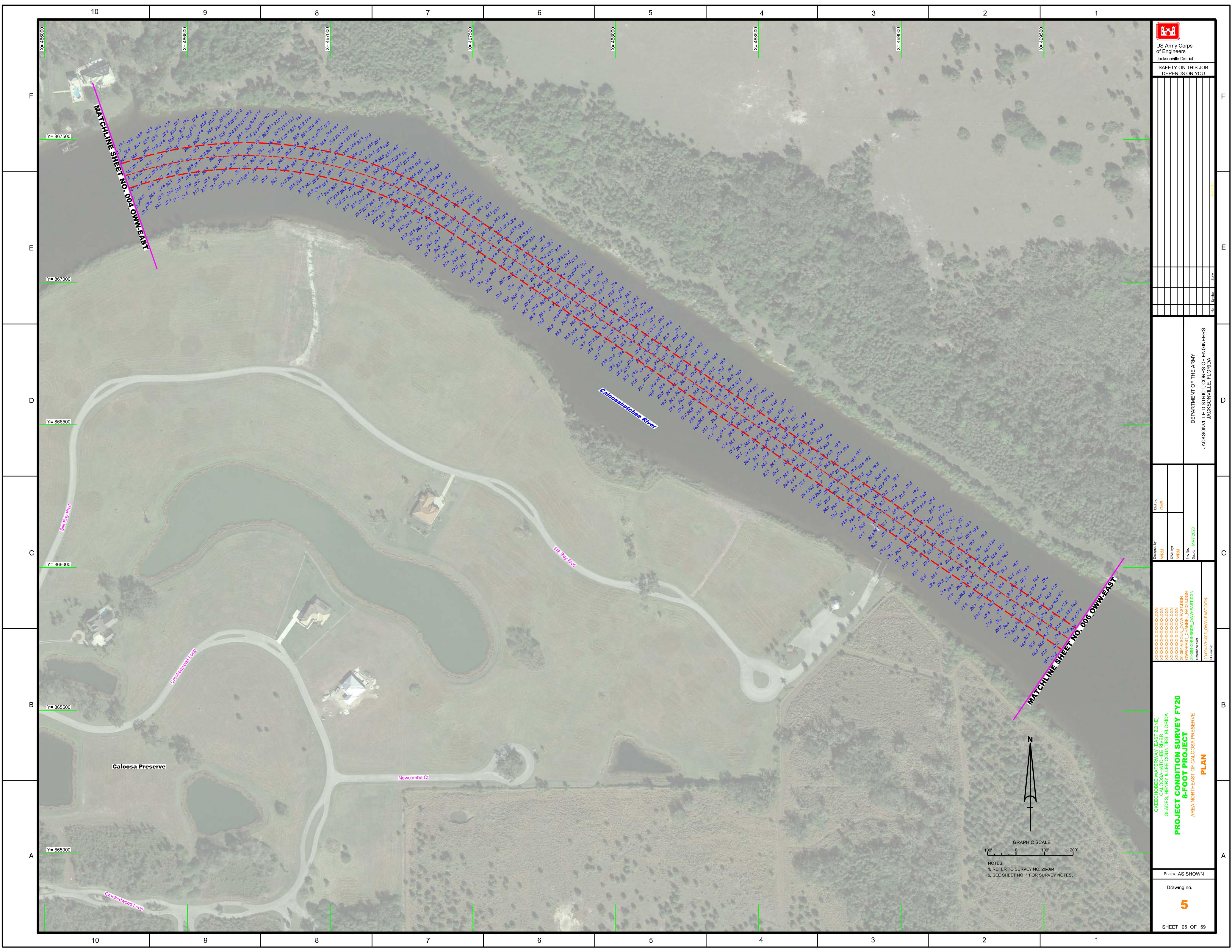
F
E
D
C
B
A

Y= 867500
Y= 867000
Y= 866500
Y= 866000
Y= 865500
Y= 865000
Y= 864500

X= 465500 X= 466000 X= 466500 X= 467000 X= 467500 X= 468000 X= 468500

Hay
Grabe
Fla
Elder
Oili
Cork
Basal
Eboe St
Elika St
Trowers Ln
Harper Cove Ln
Bedman Creek Dr
Corkley Clark Dr
Pearl St

100' 0 100' 200'



US Army Corps
of Engineers
Jacksonville District

SAFETY ON THIS JOB
DEPENDS ON YOU

NO.	SYMBOL	ZONE

DEPARTMENT OF THE ARMY
JACKSONVILLE DISTRICT, CORPS OF ENGINEERS
JACKSONVILLE, FLORIDA

Designed by:
WRM
DWM/PTC

Checked by:
GHR

File No.:
J200843-BR30R_OWWEAST.DGN
J200843-BR30R_OWWEAST.DGN
Reference File:
J200843-PROJ_OWWEAST.DGN

Date:
MAY 2020

OKEECHOBEE WATERWAY (EAST ZONE)
CALOOSAHATCHEE RIVER
GLADES, HEYRICH & LEE COUNTIES, FLORIDA

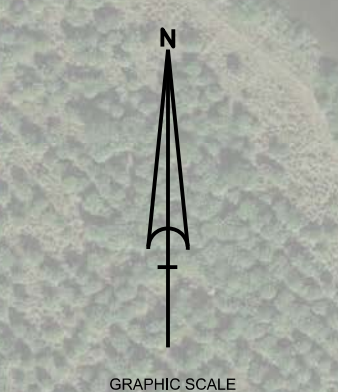
PROJECT CONDITION SURVEY FY20
8-FOOT PROJECT
PLAN

AREA NORTHEAST OF CALOOSA PRESERVE

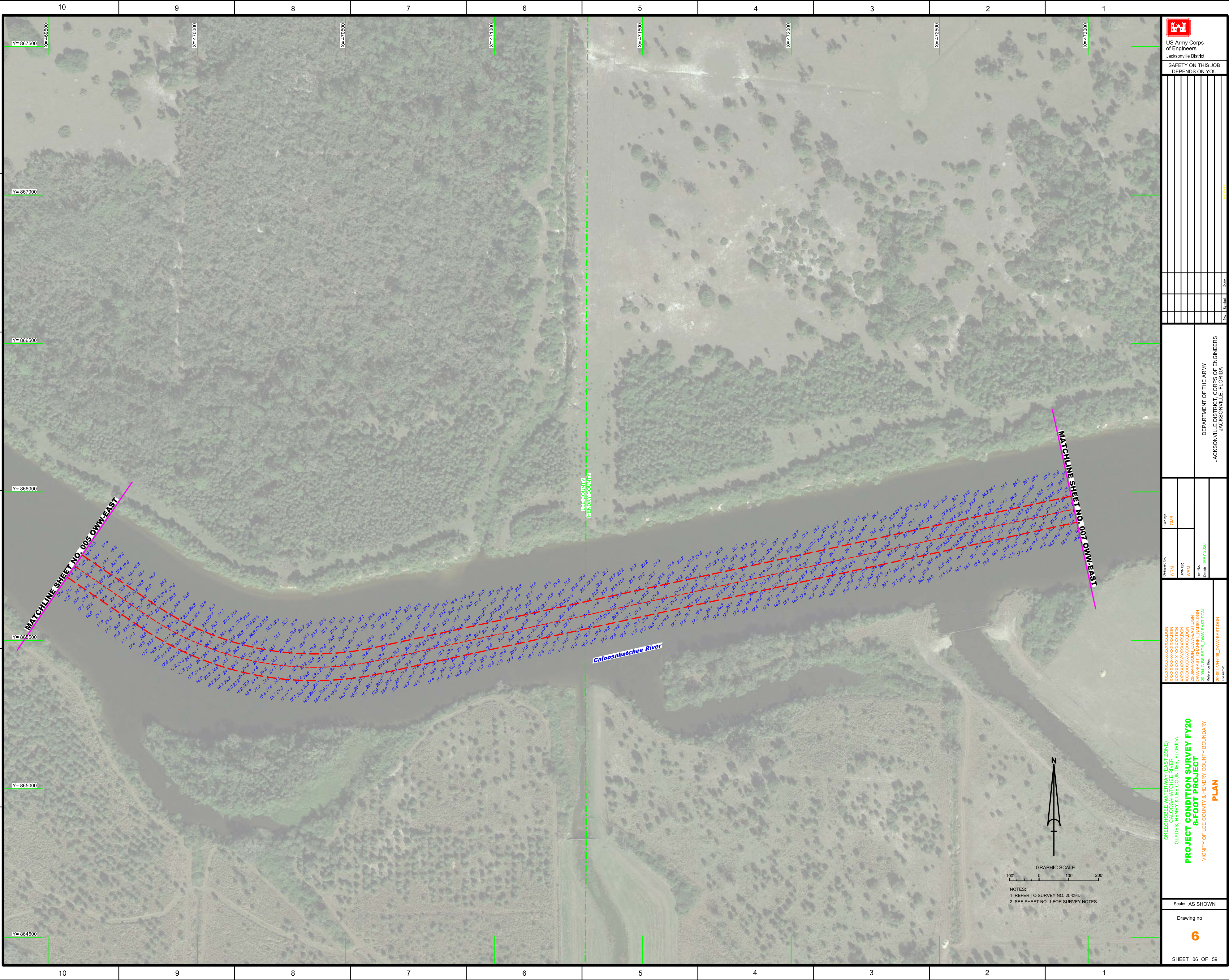
Scale: AS SHOWN


Drawing no.
5

SHEET 05 OF 59



NOTES:
1. REFER TO SURVEY NO. 20-094.
2. SEE SHEET NO. 1 FOR SURVEY NOTES.




 US Army Corps of Engineers
 Jacksonville District
 SAFETY ON THIS JOB
 DEPENDS ON YOU

Drawn by	WRM
Checked by	GHR
Design Date	MAY 2020
File Name	20-094-HR006_OWNEAST.DGN
Project Name	OWNEAST CHANNEL MODERNIZATION
Project No.	20-094-BS-BR06_OWNEAST.DGN
Reference File	20-094-HR006_OWNEAST.DGN

DEPARTMENT OF THE ARMY
 JACKSONVILLE DISTRICT, CORPS OF ENGINEERS
 JACKSONVILLE, FLORIDA

OKEECHOBEE WATERWAY (EAST ZONE)
 CALOOSAHATCHEE RIVER, FLORIDA
 GLADES, HENRY & LEE COUNTIES, FLORIDA
PROJECT CONDITION SURVEY FY20
8-FOOT PROJECT
 VICINITY OF LEE COUNTY & HENDRY COUNTY BOUNDARY
PLAN

Scale: AS SHOWN
 Drawing no.
6
 SHEET 06 OF 09

